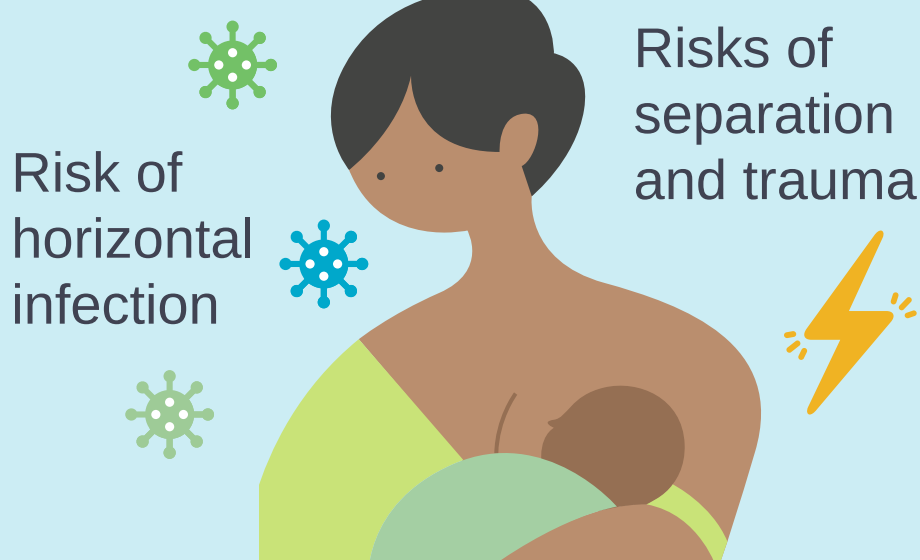


SHARED DECISION-MAKING PROTECTS MOTHERS + INFANTS DURING COVID-19

KEEPING MOTHERS + INFANTS TOGETHER

Means balancing...



EVIDENCE

We encourage families and clinicians to remain diligent in learning **up-to-date evidence**.

PARTNERSHIP

SHARED DECISION-MAKING

What is the best for this unique dyad?

- S**EEK PARTICIPATION
- H**ELP EXPLORE OPTIONS
- A**SSESS PREFERENCES
- R**EACH A DECISION
- E**VALUATE THE DECISION



TRAUMA-INFORMED

Both parents and providers are confronting significant...

- **FEAR**
- **GRIEF**
- **UNCERTAINTY**

LONGITUDINAL DATA

We need to understand more about outcomes for mothers and infants exposed to COVID-19, with special attention to:

- **MENTAL HEALTH**
- **POSTPARTUM CARE DELIVERY**



NEW DATA EMERGE DAILY.

NANN AND NPA ENCOURAGE PERINATAL CARE PROVIDERS TO ENGAGE IN CANDID CONVERSATIONS WITH PREGNANT PARENTS PRIOR TO DELIVERY REGARDING RISKS, BENEFITS, LIMITATIONS, AND REALISTIC EXPECTATIONS.

Partnering for patient-centered care when it matters most.



National Association of Neonatal Nurses

nann.org



nationalperinatal.org